

The MudChaser™

The MudChaser™ Zero Visibility Tool™ is a patented device that allows divers to see in and through muddy/turbid water conditions using a simple, cost-effective technique for close-in work and inspections.

Description

At the heart of the Clearview System™ is Blackwater Vision's patented turbid, black water displacement, hand-held viewing device, the MudChaser™. With its integrated color camera and LED lighting, spectacular and vivid color imagery is transmitted back to the console operator and to the diver. Using a proprietary technique, the weightless MC106 efficiently displaces the turbid water conditions and cuts a clear tunnel out to 18" (beyond arm's reach), allowing the target area to be viewed and inspected up close and personal!

With balance, simplicity, safety, and flexibility engineered into the design, Blackwater Vision, LLC brings to market a new, extraordinary, and unparalleled tool for the challenging black water work of the commercial diver.

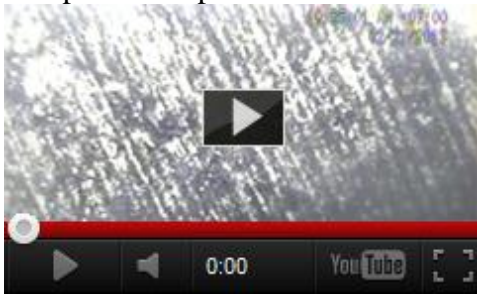


Applications

- **Inspections/Surveys**
- **Salvage and Recovery**
- **Ship Repair & Examinations**
- **Search/Rescue Missions**
 - **Archeological Digs**
- **Any Underwater Work in Black Water Conditions**

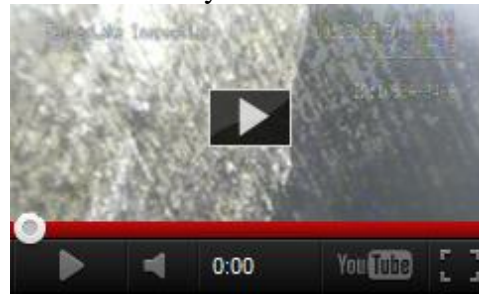
Videos

Tempe Fire Dept



2:56 minutes

Dense Turbidity Demo



2:13 minutes




MC106 Perf & Diver Commentary



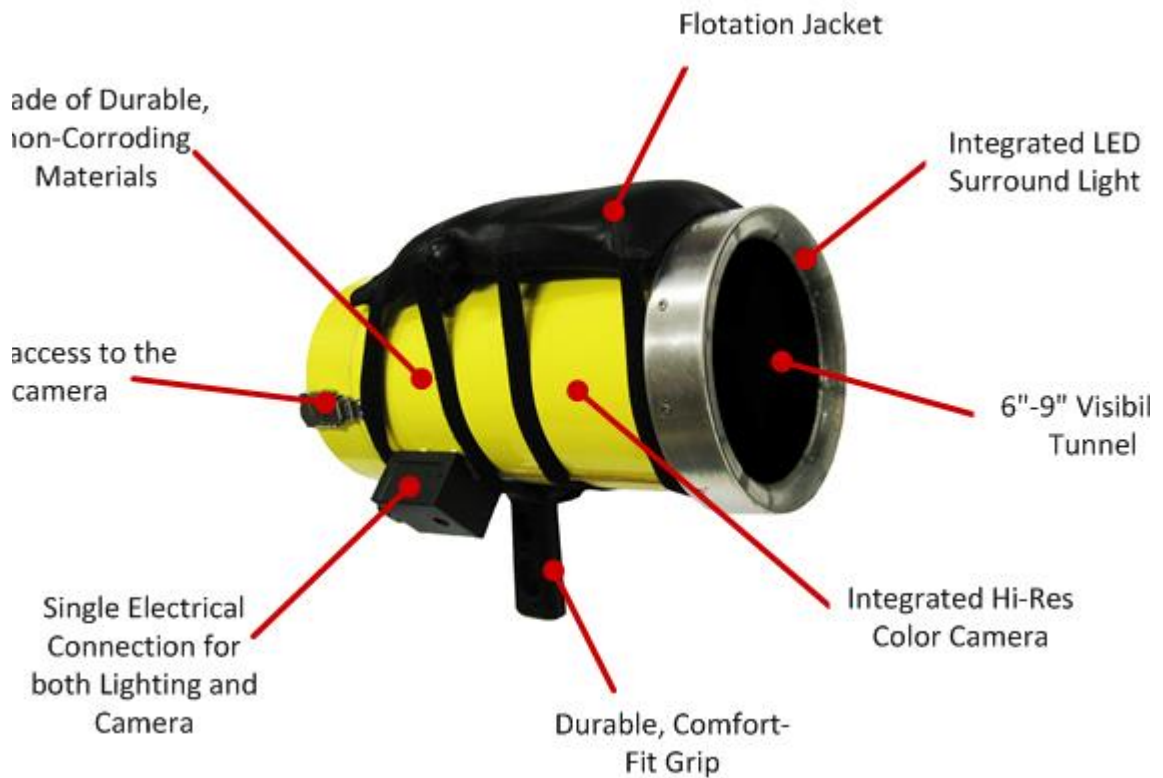
2:56 minutes

Features/Benefits

Feature		Benefit
The MudChaser™ concept	➔	This patented device and technique allows construction or service providers a cost-effective solution to seeing clearly and working in the worst black water conditions at short ranges, and do what no synthetic process can do - see!
With the integrated camera	➔	A well designed, time-saving, consistent results approach ensures a very cost- and time-effective and highly reliable approach, to ensure great the video capture every time, inspect on-site at close range in real-time with no interpretation required of synthetic imagery.
Integrated high intensity LED lighting	➔	Makes for a lighter, more stream-lined, efficient design while putting surrounding light on the target area of interest allowing the diver is able to see his work more clearly and effectively.
Single Electrical connection for lighting and camera	➔	Allows for quick connect/disconnect for both the integrated color camera and the LED lighting when it's ready to be used and go to work.
Rugged, simple, clever design	➔	Designed for quick assembly/disassembly, the MudChaser™ allows for ease of set-up, camera alignment, and maintenance. The rugged design permits it to be used in the harsh and hazardous environments of commercial diving, while the camera is safely housed within the MudChaser™.

<p>Comfortable hand grip</p>		<p>Rugged and durable, the handgrip is designed for secure, comfortable, and stable maneuvering of the MudChaser™ in all positions.</p>
<p>Rear end cap quick release</p>		<p>Allows for easy access to the camera.</p>
<p>Flotation Jacket</p>		<p>Capable of hold 8 mini-flotation pads, the MudChaser buoyancy can be adjusted from a weight of 2.5lbs (no floatation), to neutral buoyancy, to slightly positive buoyancy relieving any burden on the diver.</p>

MudChaser™ Features



Specifications

Inlet Water Port	1.5" NPT Female (1.5"x1.25" bushing included)
Outlet Mouth Opening	6in
Flow rate range (operating)	20 gpm
Flow rate (max)	25 gpm
Range (useable) at 20gpm	Up to 20in (in still water)
Weight, dry (w/camera)	9.0lbs / 19.8kg
Weight, wet (w/o flotation jacket)	1.8lbs / 4.0 kg
Weight, wet (w/ flotation jacket)	0 lbs / 0kg (Neutral buoyancy)
Length (in/cm)	17.5in / 44.5cm
Outer Diameter (in/cm) (std nozzle)	7.25in / 18.4cm
Color	Yellow
Finish	Outer surfaces - Epoxy coating over PVC



Features	Very Low Light Sensitivity
	Lens: 3,6mm, f1.4
	Focal Length: 7-20"
	Depth Rating: 930ft / 300m
Mechanical	Size: 1.6"(4.1cm) Diam x 7.3"(18.5cm)
	Body Material: Black Delrin
Video/Electrical	Video signal output: NTSC
	Resolution: 600 horizontal lines
	Sensitivity: 0.01lux